



Research paper

Self-compassionate teachers are more autonomy supportive and structuring whereas self-derogating teachers are more controlling and chaotic: The mediating role of need satisfaction and burnout[☆]



Angelica Moè^{a,*}, Idit Katz^b

^a Department of General Psychology, University of Padua, Italy

^b Department of Education, Ben-Gurion University of the Negev, Beer-Sheva, Israel

HIGHLIGHTS

- The higher the teacher self-compassion the more they perceive their needs satisfied.
- Self-derogation relates to teacher need frustration.
- Need satisfaction shapes the adoption of a motivating style though personal accomplishment.
- Need frustration relate with adoption of a demotivating style through the mediation of burnout.

ARTICLE INFO

Article history:

Received 7 October 2019

Received in revised form

4 July 2020

Accepted 20 July 2020

Available online 5 August 2020

Keywords:

Autonomy-support

Controlling teaching

Motivating styles

Need-satisfaction and frustration

Self-compassion

Burnout

ABSTRACT

This study examined whether teacher self-compassion can lead to adoption of autonomy supportive and structuring motivating styles rather than de-motivating controlling and chaotic styles. Teacher psychological need satisfaction and burnout were considered as possible mediators. Self-report questionnaires assessing self-compassion, need satisfaction, burnout and use of (de)motivating teaching styles were completed by 318 teachers. The results showed that the more teachers rated themselves as self-compassionate, the higher their need satisfaction, personal accomplishment and use of autonomy-supportive and structuring motivating styles. The higher the teachers' tendency to self-derogate, the higher their need frustration, burnout and use of controlling and chaotic motivating styles.

© 2020 Elsevier Ltd. All rights reserved.

The behaviors teachers routinely use to engage their students ("teachers' motivating style"; see Reeve, 2016) play a key role in students' motivation to learn. Two motivating teaching styles (autonomy-supportive and structuring), and two de-motivating teaching styles (controlling and chaotic) have been described extensively in the literature (Aelterman et al., 2019). They differ in the extent to which they support or frustrate students' three basic psychological needs for autonomy, competence, and relatedness as

posited by Self-Determination Theory (SDT: Ryan & Deci, 2000; 2017; Vansteenkiste et al., 2020). Although considerable research has dealt with the positive effects of autonomy-supportive or structuring styles and the negative consequences of controlling or chaotic styles (e.g., Diseth, Breidablik, & Meland, 2018; Haerens et al., 2018; Moè, Katz, & Alesi, 2018; Mouratidis, Michou, Aelterman, Haerens, & Vansteenkiste, 2018), much less is known about the interplay of factors related to teachers' preference for a specific style (Reeve et al., 2018).

Previous research has mainly investigated social-contextual factors as antecedents of teachers' preferences for a motivating or de-motivating style (Pelletier et al., 2002; Pelletier & Sharp, 2009). Only a few studies have explored teachers' individual characteristics such as personality traits (Reeve et al., 2018), the satisfaction of teachers' own psychological needs (Aelterman et al., 2019; Moè &

[☆] The present work was carried out within the scope of the research program Dipartimenti di Eccellenza (art.1, commi 314–337 legge 232/2016), which was supported by a grant from MIUR to the Department of General Psychology, University of Padua.

* Corresponding author. via Venezia 8, 35131, Padova, Italy.

E-mail address: angelica.moè@unipd.it (A. Moè).

Katz, 2020), or burnout (Soenens et al., 2012). Overall, the findings suggest the need for a better understanding of the relationships among teachers' personal characteristics and adoption of (de) motivating styles.

1. (De)motivating teaching styles

Aelterman et al. (2019) defined four (de)motivating styles they termed autonomy-supportive, structuring, controlling and chaotic, which differ in terms of the support teachers provide to students. Autonomy-supportive teachers seek to identify students' interests and try to involve them in learning activities they find meaningful, thus favoring choice. They display patience and accept expressions of negative affect (e.g., Aelterman et al., 2019; Assor et al., 2002; Jang et al., 2016; Patall et al., 2010). For instance, if students appear uninterested or tend to disengage, they listen to the students' point of view and pay attention to input or suggestions for making the topic more interesting and feasible, thus manifesting an interest in how the students feel. Structuring teachers typically display guidance. They provide help, assistance, and suggest strategies that enable students to feel more competent. They may suggest which strategies work better and the advantages of using them (e.g. Katz & Assor, 2007; Jang et al., 2010; Vansteenkiste et al., 2012). For instance, they explain how to solve a new problem step by step, and then ask students to work by themselves at their own pace to find their best strategies. These two styles are considered to be motivating because they satisfy students' basic psychological needs for autonomy, competence, and relatedness (Aelterman et al., 2019), as defined by STD. By contrast, controlling teachers tend to put unreasonable pressure on students, be demanding, and not permit engagement or the exercise of choice, and show a poor understanding of students' perspective and feelings, to the extent of asking them to accomplish the 'impossible'. These teachers decide how and when a task must be done and may punish or make students feel guilty or ashamed if they fail to follow instructions (e.g., Bartholomew et al., 2011; Soenens et al., 2012). Chaotic teachers are characterized by a laissez-faire attitude and are not clear in their expectations. They relinquish their role as leaders and leave the initiative up to students who are unsure what to do and what is expected. The controlling and chaotic styles are considered demotivating since students feel the teacher has abandoned them, which can make them feel undeserving, incompetent and unimportant (e.g., Mouratidis et al., 2013; Sierens et al., 2009). This frustration of the basic psychological needs for competence, autonomy and relatedness can lead to disengagement and ill-being (e.g., Assor et al., 2005; Haerens et al., 2016; Vansteenkiste & Ryan, 2013).

2. Factors associated with adoption of (de)motivating teaching styles

Most previous research on (de)motivating teaching styles has examined the role of contextual factors such as pressure from above (Pelletier & Sharp, 2009), student misbehavior in the classroom (Pelletier et al., 2002), and teachers' attempts to model themselves on other teachers' methods (Taylor et al., 2009).

Only a few studies have dealt with teachers' personal characteristics in predicting their motivating style. Pelletier et al. (2002) suggested that teachers' motivation to teach and their perceptions of their students' motivations shape the style they prefer. Reeve et al. (2018) showed that personality factors such as openness to experience and agreeableness predicted an autonomy-supportive style, whereas a control orientation and authoritarianism favored a controlling de-motivating style. In other studies (e.g. Reeve, 2009), teachers' need frustration was shown to increase

the likelihood of using a controlling style. Teachers' need satisfaction was shown to be related to their tendency to use autonomous or structuring styles whereas need-frustration was linked to demotivating styles (Aelterman et al., 2019). Teachers' experience of "burnout" was also considered as a possible antecedent of a demotivating style. Several studies (e.g., Aelterman et al., 2019; Jennings, 2015; Soenens et al., 2012; Van den Berghe et al., 2014) confirmed that burnout was associated with de-motivating styles. However, there is scant research on the personal factors that may affect teacher's motivating styles, one of which is self-compassion.

3. Self-compassion

Self-compassion, which derives from Buddhist thought, is defined as a positive attitude towards oneself characterized by a non-judgmental attitude of understanding, openness, and acceptance of one's own suffering, shortcomings and inadequacies (Neff, 2003a). Self-compassion involves expressing one's own true self, being authentic, being attentive to one's inner states, a positive and kind attitude towards oneself, the perception of being as worthy as other people, and emotional balance deriving from mindfulness (e.g., Neff, 2003a; Neff, 2011; Neff et al., 2005). Self-compassionate individuals reflect on events with a caring attitude, display behaviors indicative of self-kindness, realize that everybody can make mistakes, are warm towards themselves and do not identify with their failures. By contrast, self-derogating individuals tend to be self-judgmental, take a critical attitude, and consider themselves to be failures in comparison to others.

Previous studies have found that self-compassion may be a key component in individuals' wellbeing (e.g., Saricaoglu & Arslan, 2013), and can impact their attitudes and behavior towards others (e.g., Neff & Beretvas, 2013). This may suggest that the more people are self-compassionate, the more they may act on the basis of volitionally endorsed and personally meaningful goals rather than external pressures (e.g., avoiding shame or obtaining rewards). Self-compassionate people may feel their basic psychological needs of competence, autonomy, and relatedness are more likely to be satisfied rather than frustrated (Deci & Ryan, 2000). Findings confirm that people who rank high on self-compassion are more likely to endorse autonomous goals (Hope et al., 2014), and perceive that their basic psychological needs have been satisfied (Ghorbani et al., 2012).

4. The current study

To the best of our knowledge, the current study is the first to directly investigate the putative associations between teachers' self-compassion and (de)motivating teaching styles. Studies conducted in other educational contexts lend weight to this rationale. For example, Jennings (2015) showed that teachers' self-compassion was associated with their greater emotional support of challenging students. Wiklund Gustin and Wagner (2013) investigated nursing teachers and showed that the ability to be sensitive, nonjudgmental and respectful towards oneself contributed to a compassionate approach towards others. Neff and Beretvas (2013) examined romantic relations and reported that being self-compassionate was linked to being more caring and supportive as compared to controlling or being verbally aggressive toward one's partner. Lindsay and Creswell (2014) found that self-compassion enhanced pro-social behaviors. In general, these studies suggest that self-compassion may be associated with more caring and supportive behaviors towards others, whereas self-derogation is likely to be more highly correlated with controlling, tough, and inflexible behaviors towards others. Here, we posited that the higher teachers' self-compassion, the greater their need

satisfaction and the lower their burnout, which are proxies for well-being. These teachers were predicted to have better resources to be supportive (Wiklund Gustin & Wagner, 2013), and thus to display a higher tendency to use autonomy-supportive and structuring styles. By contrast, the higher the teachers' tendency to engage in self-judgment and criticism (self-derogation), the greater their need frustration and burnout, which is likely to result in ego depletion and the tendency to implement a chaotic or controlling style.

Moreover, in addition to these hypothesized direct relationships among self-compassion, self-derogation and the four motivating styles, the mediation of need-satisfaction, need-frustration and burnout was also hypothesized.

5. The mediating role of need satisfaction and burnout

Teacher need satisfaction and personal accomplishment serve as emotional resources that favor adoption of an autonomy supportive and structuring style (Aelterman et al., 2016; Cheon, Reeve, Yu, & Jang, 2014; Katz & Shahar, 2015). By contrast, need frustration and burnout deplete these emotional resources leading to an increase in the teachers' tendency to be controlling or chaotic (e.g., Hakkanen, Bakker, & Schaufeli, 2006; Skaalvik & Skaalvik, 2010; Soenens et al., 2012).

Only one study (Ghorbani et al., 2012) has directly investigated the relationship between self-compassion and need satisfaction, confirming that the higher the teachers' self-compassion, the higher their need satisfaction and the lower their need frustration. However, the associations with self-compassion were investigated on a range of well-being dimensions which can be considered proxies for need-satisfaction, such as endorsement of autonomous goals, life satisfaction, self-esteem, vitality, positive affect, and emotion-focused coping (Barnard & Curry, 2011; Hope et al., 2014). These associations have been found to be positive for a range of populations, including students (e.g., Gunnell, Mosewich, McEwen, Eklund, & Crocker, 2017; Hope et al., 2014; Neff et al., 2005) and teachers (e.g., Jennings, 2015).

Similarly, self-compassion may be related negatively to burnout (Allen & Leary, 2010). Burnout is defined as "a prolonged response to chronic emotional and interpersonal stressors on the job" (Maslach & Leiter, 2016, p. 351). This job-related psychological strain can lead to emotional exhaustion, which is characterized by low energy and vitality, cynicism or depersonalization which refers to the tendency to give up on attempts to repair relationships and the tendency to treat others impersonally. In this sense, the antithesis of burnout is personal accomplishment, which is characterized by perceived realization and a good fit between one's personal and achieved goals (for a review see Maslach, Schaufeli, & Leiter, 2001). Symptoms of burnout are typical of any profession, but mainly those based on constant relationships with others or those involving a responsibility for them such as in the nursing and teaching professions (De Silva et al., 2009).

Based on the distinction between a "brighter" and a "darker" path (Bartholomew et al., 2011; Costa et al., 2015), we hypothesized a two-path model. The "brighter" path guided by self-compassion was predicted to account for teachers' tendency to use autonomy-supportive and structuring styles, mediated by need-satisfaction and personal accomplishment. The "darker" path, galvanized by self-derogation, was predicted to characterize teachers' tendency to use controlling and chaotic styles mediated by need-frustration and burnout. Given that studies have shown that the higher the need satisfaction and autonomous regulation (e.g., Fernet, Guay, Senécal, & Austin, 2012; Fernet et al., 2017) the lower the burnout, whereas the higher the need frustration, the higher the burnout (e.g., Jennings, 2015; Soenens et al., 2012; Van

den Berghe et al., 2014), we hypothesized that need satisfaction/frustration would be related to burnout and not the reverse.

6. Hypotheses

Specifically, we hypothesized that:

H1. Self-compassion and self-derogation will be (a) positively associated with need satisfaction and need frustration but (b) negatively associated with need frustration and need satisfaction;

H2. Need satisfaction and need frustration will be (a) positively associated with personal accomplishment and burnout and (b) negatively associated with burnout and personal accomplishment;

H3a. Personal accomplishment will be associated with autonomy-supportive and structuring teaching styles;

H3b. Burnout will be associated with controlling and chaotic teaching styles;

H4. Overall, we predicted a model in which teachers' self-compassion and self-derogation were exogenous independent variables, teachers' need satisfaction, need frustration, personal accomplishment and burnout were mediating variables, and teachers' autonomy-supportive, structuring, controlling and chaotic styles were the outcome variables. We assessed this model while controlling for two variables that could potentially affect the results: social desirability and years of teaching.

7. Method

Participants. A total of 318 Italian teachers (82% females) participated on a voluntary basis. An a-priori power analysis showed that the minimum sample size required for detecting a medium effect size was $n = 155$; hence, the sample was large enough for our correlational design. The participants taught different subjects such as Italian ($n = 84$, 26%), second languages ($n = 42$, 13%), mathematics and science ($n = 92$, 29%), arts or technology ($n = 27$, 8%), PE ($n = 7$, 2%), or others ($n = 66$, 22%), in primary ($n = 24$, 8%), middle ($n = 140$, 44%) and high ($n = 154$, 48%) school. Their mean age was 42.45 ($SD = 11.02$, range = 23–65 years). They had been teaching for 12.15 years with a $SD = 11.32$, ranging from less than 1 year to 40 years in different schools located in various areas of Italy: 73% in the North, 16% in the Center, 11% in the South.

8. Measures

Need Satisfaction and Need Frustration. We used the validated Italian version (Costa et al., 2018) of the Basic Psychological Need Satisfaction and Frustration scale (BPNSNF: Chen et al., 2015). Participants were asked to rate 24 items on a 5-point Likert scale ranging from 1 = *completely disagree* to 5 = *completely agree* preceded by the stem 'At school' to assess satisfaction or frustration of each of the three basic psychological needs. Example items are 'I feel that my decisions reflect what I really want', and 'I feel pressured to do too many things', for need satisfaction and frustration respectively. Two scores were computed by summing the need satisfaction (Cronbach alpha = .84) and need frustration (Cronbach alpha = .83) items, then dividing by 12.

Self-compassion. We used the Self-Compassion Scale (Neff, 2003b), Italian validation (Petrocchi et al., 2014). It consists of 26 items, 13 of which assess facets of self-compassion (self-kindness, common humanity, mindfulness; example items are 'When I'm going through a very hard time, I give myself the caring and tenderness I need' and 'When I feel inadequate in some way, I try to

remind myself that feelings of inadequacy are shared by most people'), and 13 facets of self-derogation (self-judgment, isolation, over-identification; example items are 'I'm disapproving and judgmental about my own flaws and inadequacies', and 'When I fail at something important to me I become consumed by feelings of inadequacy'), which were rated on a 5-point-Likert scale ranging from 1 = *almost never* to 5 = *almost always*. Two mean scores were computed respectively for self-compassion and self-derogation (the Cronbach alphas were respectively .83 and .90).

Burnout. This was assessed using the scale developed by Maslach and Jackson (1981). This instrument was preferred over more recent ones such as the Oldenburg Burnout Inventory (OBI: Demerouti et al., 2001), because it is validated in Italian (Sirigatti et al., 1988). It contains 22 items assessing Personal Accomplishment (an example item is 'I have accomplished many worthwhile things in this job') which refers to lack of burnout, Emotional Exhaustion (example item 'I feel frustrated by my job') as in the OBI, and one form of Disengagement, namely Depersonalization (example item 'I don't really care what happens to some students') which express burnout. Participants were asked to rate each item on a 6-point Likert scale ranging from 0 = *never* to 6 = *every day*. The Cronbach alphas were .83, and .87 respectively for Personal Accomplishment and Burnout.

Social Desirability. To control for social desirability, we used the Balanced Inventory of Desirable Responding (BIDR: Paulhus, 1991), in the Italian validation by Bobbio and Manganeli (2011). It presents 16 items assessing self-deceptive enhancement (the tendency to provide honest but biased self-reports; example item 'I am a completely rational person') and impression management (the tendency to try to make a good impression, sometimes based on lying; example item 'I always obey laws, even if I'm unlikely to get caught'). Participants are asked to rate each item on a 6-point Likert scale ranging from 1 = *strongly disagree* to 6 = *strongly agree*. Two scores were computed by averaging the 8 items corresponding to the two facets of social desirability. The Cronbach alphas were .73 and .75 respectively for self-deceptive enhancement and impression management.

Teaching Style. We used the Situations-in-School (SIS) questionnaire (Aelterman et al., 2019), translated into Italian and back-translated into English by two native speakers of both languages. It presents 15 vignettes (e.g., "You are thinking about classroom rules. So you ...") followed by four potential behaviors corresponding to the four (de)motivating styles: autonomy-supportive, characterized by participation and attuning behaviors (e.g., 'Invite students to suggest a set of guidelines that will help them to feel comfortable in class'), structuring, which provides guidance and clarification (e.g., 'Make an announcement about your expectations and standards for being a cooperative classmate'), controlling, being demanding and dominating (e.g., 'Post your rules. Tell students they have to follow all the rules'), and chaotic, characterized by waiting and laissez-faire (e.g., 'Don't worry too much about the rules and regulations'). The participants were asked to rate each of the 4 alternatives for each scenario on a 7-point Likert scale ranging from 1 = *does not describe me at all* to 7 = *describes me extremely well*. The Cronbach alphas were .84, .86, 0.84, and 0.86 respectively for the autonomy-supportive, structuring, controlling, and chaotic styles.

9. Procedure

After having obtained approval from the institutional Ethical Committee (protocol number 2861), teachers from a wide range of schools, partly contacted by one of the authors, partly by research assistants, were invited to fill in an online survey (through the schools, social websites or personal contacts). In return, if they so

requested, they were sent a short report of the main results including tips for motivating students and themselves, after providing their e-mail address (74% did so).

After a descriptive page stating that the researchers were studying motivation and well-being in teachers and asking them to sign the consent form, the five questionnaires were presented in the order described above, followed by a few demographic questions (age, years of teaching, gender, school type, subject taught), and a thanking message.

10. Data analysis and results

We first calculated Pearson correlations among all the research variables, and their correlations with the control variables of social desirability and years of teaching. As shown in Table 1, the latter were correlated with all the other variables except for controlling style. More years of teaching experience were associated with greater self-compassion, personal accomplishment and adoption of an autonomy supportive and structuring style, and fewer years of teaching with self-derogation. Confirming H1a, self-compassion and self-derogation were positively associated with need satisfaction and need frustration, respectively. Confirming H1b, self-compassion and self-derogation were negatively associated with need frustration and need satisfaction respectively. Need satisfaction was positively associated with personal accomplishment whereas need frustration was positively associated with burnout, and negatively associated with personal accomplishment (confirming H2a). Need satisfaction was negatively associated with burnout, and need frustration was negatively associated with personal accomplishment (confirming H2b). The autonomy-supportive and structuring styles were positively associated with personal accomplishment (confirming H3a), whereas the controlling and chaotic styles were positively associated with burnout (confirming H3b). This set of correlations suggested the feasibility of investigating the hypothesized mediation model (H4).

To test H4, we used structural equation modelling (SEM) with maximum likelihood estimation via AMOS 21 (Arbuckle & Wothke, 2006), while controlling for the years of teaching and social desirability effects on the dependent variables (see Table 2 and Fig. 1). The model fit to data was adequate: $\chi^2/df = 2.297$, $p = .001$; $NFI = 0.96$; $CFI = 0.97$; $TLI = 0.94$; $RMSEA = 0.06$: Hu and Bentler (1998). The relationships between self-derogation and teachers' controlling and chaotic styles were both direct and indirect (through the partial mediation of need-frustration and burnout). The relations between self-compassion and autonomy-supportive and structuring style were not direct and were fully mediated by need satisfaction and personal accomplishment.

11. Testing alternative models

Although the analysis supported the hypothesized model, the findings did not rule out the possibility that other models could fit the data, perhaps better. Thus, to provide further support for the hypothesized relationships, we tested the fit of three alternative models.

In the first alternative model we entered teaching (de)motivating styles as the exogenous independent variables and personal accomplishment and burnout as the outcome variables. This model was tested because there is evidence that some teaching styles appear to contribute to burnout prevention (Ghanizadeh & Jahedizadeh, 2016). The fit of this model to the data was poor ($\chi^2/df = 7.209$, $p < .001$; $NFI = 0.81$; $CFI = 0.83$; $TLI = 0.76$; $RMSEA = 0.14$). We then tested a second model in which need satisfaction/frustration were the exogenous independent variables and the motivating styles were the outcomes. The fit of this model

Table 1Descriptive statistics and correlations across variables $n = 318$.

	YT <i>r</i>	SoD <i>r</i>	1	2	3	4	5	6	7	8	9	10
1. Self-Compassion	.222**	.274**	—									
2. Self-Derogation	-.246**	-.296**	-.635**	—								
3. Need-Satisfaction	.131*	.242**	.369**	-.424**	—							
4. Need-Frustration	-.075	-.136*	-.305**	.550**	-.544**	—						
5. Personal accomplishment	.275**	.309**	.281**	-.340**	.501**	-.425**	—					
6. Burnout	-.070	-.111*	-.242**	.419**	-.475**	.603**	-.448**	—				
7. Autonomy-Supportive style	.200**	.142*	.128*	.017	.261**	-.063	.431**	-.166*	—			
8. Structuring style	.340**	.278**	.190*	-.169**	.325**	-.182*	.449**	-.214*	.709**	—		
9. Controlling style	.060	.077	-.038	.179**	-.175*	.216**	-.159**	.253**	-.092	.009	—	
10. Chaotic style	-.104	-.237**	-.074	.233**	-.242**	.325**	-.216**	.308**	-.145**	-.252**	.453**	—
Mean	12.15	3.64	3.30	2.64	3.76	2.28	4.24	2.14	4.95	5.38	3.39	2.08
SD	11.32	0.79	0.71	0.81	0.53	0.63	0.83	1.19	0.84	0.76	0.96	0.71

Note. YT= Years of Teaching; SoD = Social Desirability; $n = 318$ * $p < .05$, ** $p < .001$.**Table 2**

Results of structural equation modelling controlling for social desirability and years of teaching.

			β	B	S.E.	C.R.	p
Self-Compassion	→	Need Satisfaction	.166	.117	.045	2.570	.010
Self-Derogation	→	Need Frustration	.597	.466	.047	9.950	<.001
Self-Compassion	→	Need Frustration	.073	.061	.051	1.211	.224
Self-Derogation	→	Need Satisfaction	-.318	-.208	.042	-4.918	<.001
Need Satisfaction	→	Personal Accomplishment	.338	.519	.085	6.134	<.001
Need Frustration	→	Burnout	.489	.666	.071	9.400	<.001
Need Satisfaction	→	Burnout	-.209	-.314	.085	-4.022	<.001
Need Frustration	→	Personal Accomplishment	-.238	-.306	.071	-4.310	<.001
Personal Accomplishment	→	Autonomy-Supportive Style	.426	.438	.055	7.933	<.001
Personal Accomplishment	→	Structuring Style	.341	.310	.047	6.668	<.001
Burnout	→	Controlling Style	.210	.233	.063	3.698	<.001
Burnout	→	Chaotic Style	.247	.203	.046	4.402	<.001
Self-Compassion	→	Autonomy-Supportive Sty.	.014	.015	.059	.260	.740
Self-Compassion	→	Structuring Style	.014	.013	.049	.273	.785
Self-Derogation	→	Controlling Style	.155	.182	.070	2.607	.009
Self-Derogation	→	Chaotic Style	.127	.111	.051	2.164	.030
Social Desirability	→	Autonomy-Supportive Style	-.001	-.001	.058	-.012	.099
Social Desirability	→	Structuring Style	.148	.140	.049	2.872	.004
Social Desirability	→	Controlling Style	.136	.166	.068	2.439	.015
Social Desirability	→	Chaotic Style	.004	.003	.050	.067	.947
Years of Teaching	→	Autonomy-Supportive Style	.115	.009	.004	2.212	.027
Years of Teaching	→	Structuring Style	.239	.016	.003	4.767	<.001
Years of Teaching	→	Controlling Style	.099	.008	.005	1.825	.068
Years of Teaching	→	Chaotic Style	-.049	-.003	.003	-.915	.360

was also poor ($\chi^2/df = 12.808$, $p < .001$; $NFI = 0.68$; $CFI = 0.67$; $TLI = 0.63$; $RMSEA = 0.19$). Finally, the third model had burnout and personal accomplishment as the exogenous independent variables, and teaching styles as outcomes. The fit of this model was also unsatisfactory ($\chi^2/df = 11.477$, $p < .001$; $NFI = 0.70$; $CFI = 0.71$; $TLI = 0.69$; $RMSEA = 0.18$), thus supporting the hypothesized relationships and model.

12. Discussion

The findings of this study underscore the relationships between self-compassion/self-derogation, the use of (de) motivating teaching styles, and the mediation of teacher need-satisfaction/frustration and personal accomplishment/burnout. Consistent with previous research (e.g. Haerens et al., 2016; Moè & Katz, 2020), the results suggested that self-compassion may act as a personal resource that can not only inform well-being (Barnard & Curry, 2011), but may also enable teachers to engage in an autonomy-supportive and structuring style. The greater the teachers' self-derogation the higher their need-frustration and burnout and the lower their need satisfaction, a key resource favoring well-being and motivation (Deci & Ryan, 2011; Ryan & Deci, 2017). Extending studies that have highlighted the negative consequences of

need frustration on ego strength and well-being (Costa et al., 2015; Haerens, Aelterman, Vansteenkiste, Soenens, & Van Petegem, 2015; 2016) the findings here point to the possible deleterious consequences of self-derogation.

Interestingly, teachers' years of experience which was used in this study as a control variable, presented a unique pattern of relations with self-compassion/derogation. While previous studies on teachers' self-compassion either did not assess years of teaching (Beshai et al., 2016), or found no association between years of teaching and self-compassion/derogation (Jennings, 2015; Roesser et al., 2013; Taylor et al., 2016), the findings here showed that more experienced teachers were more self-compassionate and less self-derogating. Future studies should thus include years of teaching to examine this variable in more depth.

The full mediation of need satisfaction and personal accomplishment in the relationship between self-compassion and motivating styles, and the partial mediation of need-frustration and burnout on the relationship between self-derogation and demotivating styles are interesting. Basically, these patterns of mediation suggest that self-derogation not only has an indirect, but also a direct effect on teachers' use of de-motivating styles. By contrast, self-compassion was only related indirectly to teacher motivating styles and depended on the level of teacher need-

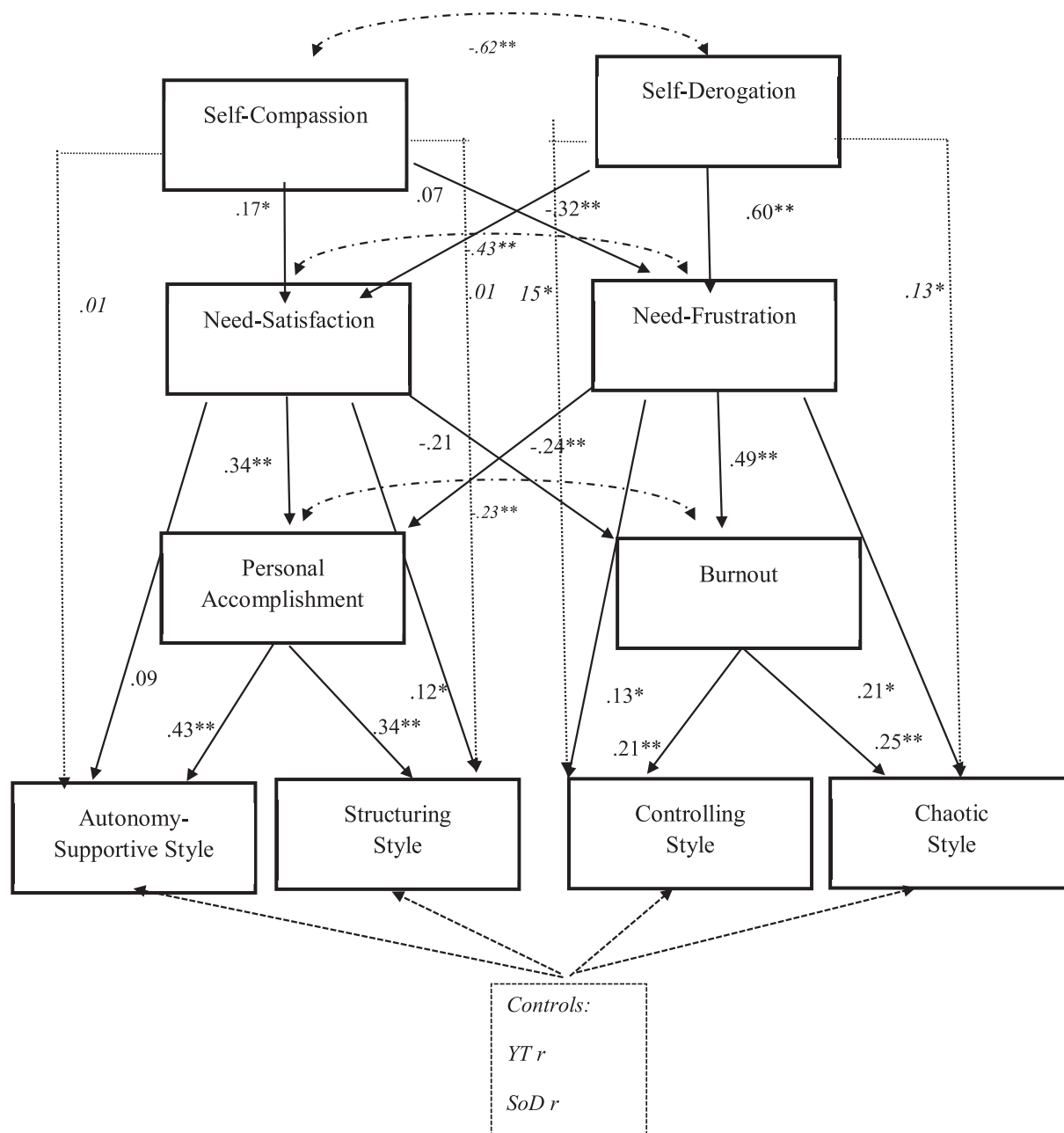


Fig. 1. Structural relations among self-compassion, self-derogation, need satisfaction or frustration, burnout and teaching (de)motivating styles when controlling for social desirability and years of teaching. Note: YT= Years of Teaching; SoD = Social Desirability; $n = 318$ * $p < .05$; ** $p < .01$.

satisfaction and personal accomplishment. This may imply that self-derogation has a detrimental effect and results in ego depletion, which may engender a lesser ability to support others (Haerens et al., 2015; 2016). However, future studies should examine why self-derogation appears to impact negatively on teachers' well-being and behavior.

13. Practical implications for teachers and teachers' education

High self-compassion and low self-derogation emerged in the findings as possible resources supporting teacher well-being and motivating behaviors in their classrooms. This suggests that ways to foster self-compassion and reduce self-derogation could be

integrated into practices aimed at encouraging teachers to implement effective motivating styles. Training programs may thus benefit from a greater emphasis on developing teachers' skills in reflecting on both self-compassion and self-derogation (Korthagen et al., 2006; Silva Mangiante & Moore, 2020). This could constitute a first step in the improvement of their own well-being and perhaps favors adoption of more supportive behaviors towards their students.

Additionally, burnout per se has been proven to be related to the adoption of a (de)motivating style, but it has also been shown to mediate the association between need satisfaction/frustration and the adoption of a (de)motivating style. From a practical point of view, this suggests that to increase teacher adoption of a motivating style it is important to promote need satisfaction, perhaps also by

fostering self-compassion, as well as to prevent burnout (for a recent meta-analysis on effective interventions see [Iancu et al., 2018](#)).

14. Limitations and future avenues

The main strengths of this study are (a) its emphasis on the predictors rather than the outcomes of teaching (de)motivating styles, by probing teacher preferences for autonomy-supportive and structuring or more controlling-chaotic styles; (b) the exploration of self-compassion that has been studied in a range of populations, but not with teachers and even more rarely for its possible relationship with need satisfaction (e.g., [Ghorbani et al., 2012](#)), (c) its focus on the interplay of the three factors (instead of a single factor a time), by modelling potential mediating mechanism paths from self-compassion to adoption of a motivating style.

Nevertheless, this study has several limitations which should be noted. The data were collected at a single time-point. In other words, the design was cross-sectional and correlational. The correlational nature of this study thus precludes drawing causal conclusions. Future studies could consider including more time points to assess the directionality of relations. Second, all the variables were self-reported. While this is commonplace in educational research, future studies could include student-reported or observed data to assess teaching styles. Third, the teachers were all volunteers. Possibly teachers who were already interested in professional development took part: the findings would have differed if less engaged teachers had been included in the sample. Fourth, only a few variables were tested: future studies should examine other personal variables related to teachers' behavior in the classroom, such as locus of control ([Cook, 2012](#)).

15. Conclusion

The findings suggest that self-compassion can shape teachers' need satisfaction which in turn emerged as related to personal accomplishment and the implementation of a motivating style. Self-derogation related to need frustration, burnout and controlling or chaotic styles. These results contribute to the literature on the factors impacting teacher (de)motivating styles and the role played by the understudied factor of self-compassion. Recognizing and drawing on self-compassion to promote need satisfaction and prevent burnout are argued to encourage the adoption of autonomy-supportive and structuring styles.

Author statement

Moè Angelica: Conceptualization; Data curation; Funding acquisition; Investigation; Methodology; Project administration; Resources; Supervision; Writing – original draft; Writing – review & editing.

Idit Katz: Conceptualization; Formal analysis; Methodology; Software; Supervision; Writing – original draft; Writing – review & editing

Declaration of competing interest

The authors declare that they have no conflict of interest.

Acknowledgments

We are very grateful to drs. Anna, Mor, Piermarco Consiglio, and Marta Cossutta for their help with data collection.

References

- Aelterman, N., Vansteenkiste, M., Haerens, L., Soenens, B., Fontaine, J. R., & Reeve, J. (2019). Toward an integrative and fine-grained insight in motivating and demotivating teaching styles: The merits of a circumplex approach. *Journal of Educational Psychology*, 111(3), 497–521. <https://doi.org/10.1037/edu0000293>
- Aelterman, N., Vansteenkiste, M., Van Keer, H., & Haerens, L. (2016). Changing teachers' beliefs regarding autonomy support and structure: The role of experienced psychological need satisfaction in teacher training. *Psychology of Sport and Exercise*, 23, 64–72. <https://doi.org/10.1016/j.psychsport.2015.10.007>
- Allen, A. B., & Leary, M. R. (2010). Self-compassion, stress, and coping. *Social and Personality Psychology Compass*, 4(2), 107–118. <https://doi.org/10.1111/j.1751-9004.2009.00246.x>
- Arbuckle, J. L., & Wothke, W. (2006). *AMOS user's guide 7.0*. AMOS Development Corporation.
- Assor, A., Kaplan, H., Kanat-Maymon, Y., & Roth, G. (2005). Directly controlling teacher behaviors as predictors of poor motivation and engagement in girls and boys: The role of anger and anxiety. *Learning and Instruction*, 15(5), 397–413. <https://doi.org/10.1016/j.learninstruc.2005.07.008>
- Assor, A., Kaplan, H., & Roth, G. (2002). Choice is good, but relevance is excellent: Autonomy-enhancing and suppressing teacher behaviours predicting students' engagement in schoolwork. *British Journal of Educational Psychology*, 72(2), 261–278. <https://doi.org/10.1348/000709902158883>
- Barnard, L. K., & Curry, J. F. (2011). Self-compassion: Conceptualizations, correlates, and interventions. *Review of General Psychology*, 15(4), 289–303. <https://doi.org/10.1037/a0025754>
- Bartholomew, K. J., Ntoumanis, N., Ryan, R. M., Bosch, J. A., & Thøgersen-Ntoumani, C. (2011). Self-determination theory and diminished functioning: The role of interpersonal control and psychological need thwarting. *Personality and Social Psychology Bulletin*, 37(11), 1459–1473. <https://doi.org/10.1177/0146167211413125>
- Beshai, S., McAlpine, L., Weare, K., & Kuyken, W. (2016). A non-randomised feasibility trial assessing the efficacy of a mindfulness-based intervention for teachers to reduce stress and improve well-being. *Mindfulness*, 7, 198–208. <https://doi.org/10.1007/s12671-015-0436-1>
- Bobbio, A., & Manganelli, A. M. (2011). Measuring social desirability responding. A short version of Paulhus' BIDI 6. *Testing. Psychometrics Methodology in Applied Psychology*, 18(2), 117–135.
- Chen, B., Vansteenkiste, M., Beyers, W., Boone, L., Deci, E. L., Van der Kaap-Deeder, J., & Verstuyf, J. (2015). Basic psychological need satisfaction, need frustration, and need strength across four cultures. *Motivation and Emotion*, 39, 216–236. <https://doi.org/10.1007/s11031-014-9450-1>
- Cheon, S. H., Reeve, J., Yu, T. H., & Jang, H. R. (2014). The teacher benefits from giving autonomy support during physical education instruction. *Journal of Sport & Exercise Psychology*, 36(4), 331–346. <https://doi.org/10.1123/jsep.2013-0231>
- Cook, L. D. (2012). Teacher locus of control: Identifying differences in classroom practices. *International Journal of Multiple Research Approaches*, 6(3), 285–296. <https://doi.org/10.5172/mra.2012.6.3.285>
- Costa, S., Inguglia, S., Inguglia, C., Liga, F., Lo Coco, A., & Larcán, R. (2018). Psychometric evaluation of the basic psychological need satisfaction and frustration scale (BPNSFS) in Italy. *Measurement and Evaluation in Counselling and Development*, 51(3), 193–206. <https://doi.org/10.1080/07481756.2017.1347021>
- Costa, S., Ntoumanis, N., & Bartholomew, K. J. (2015). Predicting the brighter and darker sides of interpersonal relationships: Does psychological need thwarting matter? *Motivation and Emotion*, 39, 11–24. <https://doi.org/10.1007/s11031-014-9427-0>
- De Silva, P. V., Hewage, C. G., & Fonseka, P. (2009). Burnout: An emerging occupational health problem. *Galle Medical Journal*, 14(1), 52–55. <https://doi.org/10.4038/gmj.v14i1.1175>
- Deci, E. L., & Ryan, R. M. (2000). The "what" and "why" of goal pursuits: Human needs and the self-determination of behavior. *Psychological Inquiry*, 11(4), 227–268. https://doi.org/10.1207/S15327965PLI1104_01
- Deci, E. L., & Ryan, R. M. (2011). Levels of analysis, regnant causes of behavior and wellbeing: The role of psychological needs. *Psychological Inquiry*, 22(1), 17–22. <https://doi.org/10.1080/1047840X.2011.545978>
- Demerouti, E., Bakker, A. B., Nachreiner, F., & Schaufeli, W. B. (2001). The Job Demands-Resources model of burnout. *Journal of Applied Psychology*, 86(3), 499–512. <https://doi.org/10.1037/0021-9010.86.3.499>
- Diseth, Å., Breidablik, H. J., & Meland, E. (2018). Longitudinal relations between perceived autonomy support and basic need satisfaction in two student cohorts. *Educational Psychology*, 38(1), 99–115. <https://doi.org/10.1080/01443410.2017.1356448>
- Fernet, C., Chantal, J., & Guay, F. (2017). What fuels the fire: Job- or task-specific motivation (or both)? On the hierarchical and multidimensional nature of teacher motivation in relation to job burnout. *Work & Stress*, 31(2), 145–163. <https://doi.org/10.1080/02678373.2017.1303758>
- Fernet, C., Guay, F., Senécal, C., & Austin, S. (2012). Predicting intraindividual changes in teacher burnout: The role of perceived school environment and motivational factors. *Teaching and Teacher Education*, 28(4), 514–525. <https://doi.org/10.1016/j.tate.2011.11.013>
- Ghanizadeh, A., & Jahedizadeh, S. (2016). EFL teachers' teaching style, creativity, and burnout: A path analysis approach. *Cogent Education*, 3(1), 1151997. <https://doi.org/10.1080/2331186X.2016.1151997>
- Ghorbani, N., Watson, P. J., Chen, Z., & Norballe, F. (2012). Self-compassion in Iranian

- Muslims: Relationships with integrative self-knowledge, mental health, and religious orientation. *The International Journal for the Psychology of Religion*, 22(2), 106–118. <https://doi.org/10.1080/10508619.2011.638601>
- Gunnell, K. E., Mosewich, A. D., McEwen, C. E., Eklund, R. C., & Crocker, P. R. (2017). Don't be so hard on yourself! Changes in self-compassion during the first year of university are associated with changes in well-being. *Personality and Individual Differences*, 107, 43–48. <https://doi.org/10.1016/j.paid.2016.11.032>
- Haerens, L., Aelterman, N., Vansteenkiste, M., Soenens, B., & Van Petegem, S. (2015). Do perceived autonomy-supportive and controlling teaching relate to physical education students' motivational experiences through unique pathways? Distinguishing between the bright and dark side of motivation. *Psychology of Sport and Exercise*, 16, 26–36. <https://doi.org/10.1016/j.psychsport.2014.08.013>
- Haerens, L., Vansteenkiste, M., Aelterman, N., & Van den Bergh, L. (2016). Towards a systematic study of the dark side of student motivation: Antecedents and consequences of teachers' controlling behaviors. In W. C. Liu, J. Chee Keng Wang, & R. M. Ryan (Eds.), *Building autonomous learners: Perspectives from research and practice using self-determination theory* (pp. 59–81). Springer. https://doi.org/10.1007/978-981-287-630-0_4
- Haerens, L., Vansteenkiste, M., De Meester, A., Delrue, J., Tallir, I., Vande Broek, G., ... Aelterman, N. (2018). Different combinations of perceived autonomy support and control: Identifying the most optimal motivating style. *Physical Education and Sport Pedagogy*, 23(1), 16–36. <https://doi.org/10.1080/17408989.2017.1346070>
- Hakanen, J. J., Bakker, A. B., & Schaufeli, W. B. (2006). Burnout and work engagement among teachers. *Journal of School Psychology*, 43(6), 495–513. <https://doi.org/10.1016/j.jsp.2005.11.001>
- Hope, N., Koestner, R., & Milyavskaya, M. (2014). The role of self-compassion in goal pursuit and well-being among university freshmen. *Self and Identity*, 13(5), 579–593. <https://doi.org/10.1080/15298868.2014.889032>
- Hu, L. T., & Bentler, P. M. (1998). Fit indices in covariance structure modeling: Sensitivity to underparameterized model misspecification. *Psychological Methods*, 3(4), 424–453. <https://doi.org/10.1037/1082-989X.3.4.424>
- Iancu, A. E., Rusu, A., Măroiu, C., Păcurar, R., & Maricuțoiu, L. P. (2018). The effectiveness of interventions aimed at reducing teacher burnout: A meta-analysis. *Educational Psychology Review*, 30(2), 373–396. <https://doi.org/10.1007/s10648-017-9420-8>
- Jang, H., Reeve, J., & Deci, E. L. (2010). Engaging students in learning activities: It is not autonomy support or structure but autonomy support and structure. *Journal of Educational Psychology*, 102(3), 588–600. <https://doi.org/10.1037/a0019682>
- Jang, H., Reeve, J., & Halusic, M. (2016). A new autonomy-supportive way of teaching that increases conceptual learning: Teaching in students' preferred ways. *The Journal of Experimental Education*, 84(4), 686–701. <https://doi.org/10.1080/00220973.2015.1083522>
- Jennings, P. A. (2015). Early childhood teachers' well-being, mindfulness, and self-compassion in relation to classroom quality and attitudes towards challenging students. *Mindfulness*, 6(4), 732–743. <https://doi.org/10.1007/s12671-014-0312-4>
- Katz, I., & Assor, A. (2007). When choice motivates and when it does not. *Educational Psychology Review*, 19, 429–443. <https://doi.org/10.1007/s10648-006-9027-y>
- Katz, I., & Shahar, B. H. (2015). What makes a motivating teacher? Teachers' motivation and beliefs as predictors of their autonomy-supportive style. *School Psychology International*, 36, 575–588. <https://doi.org/10.1177/0143034315609969>
- Korthagen, F., Loughran, J., & Russell, T. (2006). Developing fundamental principles for teacher education programs and practices. *Teaching and Teacher Education*, 22(8), 1020–1041. <https://doi.org/10.1016/j.tate.2006.04.022>
- Lindsay, E. K., & Creswell, J. D. (2014). Helping the self-help others: Self-affirmation increases self-compassion and pro-social behaviors. *Frontiers in Psychology*, 5, 1–9. <https://doi.org/10.3389/fpsyg.2014.00421>
- Maslach, C., & Jackson, S. E. (1981). The measurement of experienced burnout. *Journal of Organizational Behavior*, 2(2), 99–113.
- Maslach, C., & Leiter, M. P. (2016). Burnout. In G. Fink (Ed.), *Stress: Concepts, cognition, emotion, and behavior* (pp. 351–357). Academic Press. <https://doi.org/10.1016/B978-0-12-800951-2.00044-3>
- Maslach, C., Schaufeli, W. B., & Leiter, M. P. (2001). Job burnout. *Annual Review of Psychology*, 52(1), 397–422. <https://doi.org/10.1146/annurev.psych.52.1.397>
- Moè, A., & Katz, I. (2020). Emotion regulation and need satisfaction shape a motivating teaching style. *Teachers and Teaching: Theory and Practice*. <https://doi.org/10.1080/13540602.2020.1777960>
- Moè, A., Katz, I., & Alesi, M. (2018). Scaffolding for motivation by parents, and child homework motivations and emotions: Effects of a training programme. *British Journal of Educational Psychology*, 88, 323–344. <https://doi.org/10.1111/bjep.12216>
- Mouratidis, A., Michou, A., Aelterman, N., Haerens, L., & Vansteenkiste, M. (2018). Begin-of-school-year perceived autonomy-support and structure as predictors of end-of-school-year study efforts and procrastination: The mediating role of autonomous and controlled motivation. *Educational Psychology*, 38(4), 435–450. <https://doi.org/10.1080/01443410.2017.1402863>
- Mouratidis, A. A., Vansteenkiste, M., Michou, A., & Lens, W. (2013). Perceived structure and achievement goals as predictors of students' self-regulated learning and affect and the mediating role of competence need satisfaction. *Learning and Individual Differences*, 23, 179–186. <https://doi.org/10.1016/j.lindif.2012.09.001>
- Neff, K. (2003a). Self-compassion: An alternative conceptualization of a healthy attitude toward oneself. *Self and Identity*, 2(2), 85–101. <https://doi.org/10.1080/15298860309032>
- Neff, K. D. (2003b). The development and validation of a scale to measure self-compassion. *Self and Identity*, 2(3), 223–250. <https://doi.org/10.1080/15298860309027>
- Neff, K. D. (2011). Self-compassion, self-esteem, and well-being. *Social and Personality Psychology Compass*, 5(1), 1–12. <https://doi.org/10.1111/j.1751-9004.2010.00330.x>
- Neff, K. D., & Beretvas, S. N. (2013). The role of self-compassion in romantic relationships. *Self and Identity*, 12(1), 78–98. <https://doi.org/10.1080/15298868.2011.639548>
- Neff, K. D., Hsieh, Y. P., & Dejitterat, K. (2005). Self-compassion, achievement goals, and coping with academic failure. *Self and Identity*, 4(3), 263–287. <https://doi.org/10.1080/10.1080/1357650044000317>
- Patall, E. A., Cooper, H., & Wynn, S. R. (2010). The effectiveness and relative importance of choice in the classroom. *Journal of Educational Psychology*, 102(4), 896–915. <https://doi.org/10.1037/a0019545>
- Paulhus, D. L. (1991). Measurement and control of response bias. In J. P. Robinson, P. R. Shaver, & L. S. Wrightsman (Eds.), *Measures of personality and social psychological attitudes* (Vol. 1, pp. 17–59). Academic Press.
- Pelletier, L. G., Séguin-Lévesque, C., & Legault, L. (2002). Pressure from above and pressure from below as determinants of teachers' motivation and teaching behaviors. *Journal of Educational Psychology*, 94(1), 186–196. <https://doi.org/10.1037/0022-0663.94.1.186>
- Pelletier, L. G., & Sharp, E. C. (2009). Administrative pressures and teachers' interpersonal behaviour in the classroom. *Theory and Research in Education*, 7(2), 174–183. <https://doi.org/10.1177/1477878509104322>
- Petrocchi, N., Ottaviani, C., & Couyoumdjian, A. (2014). Dimensionality of self-compassion: Translation and construct validation of the self-compassion scale in an Italian sample. *Journal of Mental Health*, 23(2), 72–77. <https://doi.org/10.3109/09638237.2013.841869>
- Reeve, J. (2009). Why teachers adopt a controlling motivating style toward students and how they can become more autonomy supportive. *Educational Psychologist*, 44(3), 159–175. <https://doi.org/10.1080/00461520903028990>
- Reeve, J. (2016). Autonomy-supportive teaching: What it is, how to do it. In W. Liu, J. Wang, & R. Ryan (Eds.), *Building autonomous learners* (pp. 129–152). Springer.
- Reeve, J., Jang, H. R., & Jang, H. (2018). Personality-based antecedents of teachers' autonomy-supportive and controlling motivating styles. *Learning and Individual Differences*, 62, 12–22. <https://doi.org/10.1016/j.lindif.2018.01.001>
- Roeser, R. W., Schonert-Reichl, K. A., Jha, A., Cullen, M., Wallace, L., Wilensky, R., & Harrison, J. (2013). Mindfulness training and reductions in teacher stress and burnout: Results from two randomized, waitlist-control field trials. *Journal of Educational Psychology*, 105(3), 787–804. <https://doi.org/10.1037/a0032093>
- Ryan, R. M., & Deci, E. L. (2000). The darker and brighter sides of human existence: Basic psychological needs as a unifying concept. *Psychological Inquiry*, 11(4), 319–338. https://doi.org/10.1207/S15327965PLI1104_03
- Ryan, R. M., & Deci, E. L. (2017). *Self-Determination Theory: Basic psychological needs in motivation, development, and wellness* (1st ed.). Guilford Press.
- Sarıcaoglu, H., & Arslan, C. (2013). An investigation into psychological well-being levels of higher education students with respect to personality traits and self-compassion. *Educational Sciences: Theory and Practice*, 13(4), 2097–2104.
- Sierens, E., Vansteenkiste, M., Goossens, L., Soenens, B., & Dochy, F. (2009). The synergistic relationship of perceived autonomy support and structure in the prediction of self-regulated learning. *British Journal of Educational Psychology*, 79(1), 57–68. <https://doi.org/10.1348/000709908X304398>
- Silva Mangiante, E. M., & Moore, A. (2020). Elementary pre-service teachers' reflections on integrated science/engineering design lessons: Attending, analyzing, and responding to students' thinking. *Journal of STEM Teacher Education*, 54(1), 1. <https://ir.library.illinoisstate.edu/jste/vol54/iss1/1>
- Sirigatti, S., Stefanile, C., & Menoni, E. (1988). Per un adattamento italiano del Maslach Burnout Inventory (MBI). *Bollettino di Psicologia Applicata*, 187(188), 33–39.
- Skaalvik, E. M., & Skaalvik, S. (2010). Teacher self-efficacy and teacher burnout: A study of relations. *Teaching and Teacher Education*, 26(4), 1059–1069. <https://doi.org/10.1016/j.tate.2009.11.001>
- Soenens, B., Sierens, E., Vansteenkiste, M., Dochy, F., & Goossens, L. (2012). Psychologically controlling teaching: Examining outcomes, antecedents, and mediators. *Journal of Educational Psychology*, 104(1), 108–120. <https://doi.org/10.1037/a0025742>
- Taylor, C., Harrison, J., Haimovitz, K., Oberle, E., Thomson, K., Schonert-Reichl, K., & Roeser, R. W. (2016). Examining ways that a mindfulness-based intervention reduces stress in public school teachers: A mixed-methods study. *Mindfulness*, 7(1), 115–129. <https://doi.org/10.1007/s12671-015-0425-4>
- Taylor, I. M., Ntoumanis, N., & Smith, B. (2009). The social context as a determinant of teacher motivational strategies in physical education. *Psychology of Sport and Exercise*, 10(2), 235–243. <https://doi.org/10.1016/j.psychsport.2008.09.002>
- Van den Bergh, L., Soenens, B., Aelterman, N., Cardon, G., Tallir, I. B., & Haerens, L. (2014). Within-person profiles of teachers' motivation to teach: Associations with need satisfaction at work, need-supportive teaching, and burnout. *Psychology of Sport and Exercise*, 15(4), 407–417. <https://doi.org/10.1016/j.psychsport.2014.04.001>
- Vansteenkiste, M., & Ryan, R. M. (2013). On psychological growth and vulnerability: Basic psychological need satisfaction and need frustration as a unifying principle. *Journal of Psychotherapy Integration*, 23(3), 263–280. <https://doi.org/10.1037/a0032093>

[10.1037/a0032359](https://doi.org/10.1037/a0032359)

- Vansteenkiste, M., Ryan, R. M., & Soenens, B. (2020). Basic psychological need theory: Advancements, critical themes, and future directions. *Motivation and Emotion*, 44, 1–31. <https://doi.org/10.1007/s11031-019-09818-1>
- Vansteenkiste, M., Sierens, E., Goossens, L., Soenens, B., Dochy, F., Mouratidis, A. A., ... Beyers, W. (2012). Identifying configurations of perceived teacher autonomy support and structure: Associations with self-regulated learning, motivation

and problem behavior. *Learning And Instruction*, 22(6), 431–439. <https://doi.org/10.1016/j.learninstruc.2012.04.002>

- Wiklund Gustin, L., & Wagner, L. (2013). The butterfly effect of caring—clinical nursing teachers' understanding of self-compassion as a source to compassionate care. *Scandinavian Journal of Caring Sciences*, 27(1), 175–183. <https://doi.org/10.1111/j.1471-6712.2012.01033.x>